



## KING'S HARBOUR MASTER PORTSMOUTH

LNTM No 35/22

### SOUTHSEA COASTAL WORKS – ROCK ARMOUR DELIVERY OPERATIONS 2022

1. **NOTICE IS HEREBY GIVEN** by the Queen's Harbour Master Portsmouth that as part of the Southsea Coastal Scheme works, during 2022 approximately 137,000 tonnes of rock armour will be delivered to seafront area in the vicinity of Southsea Castle.



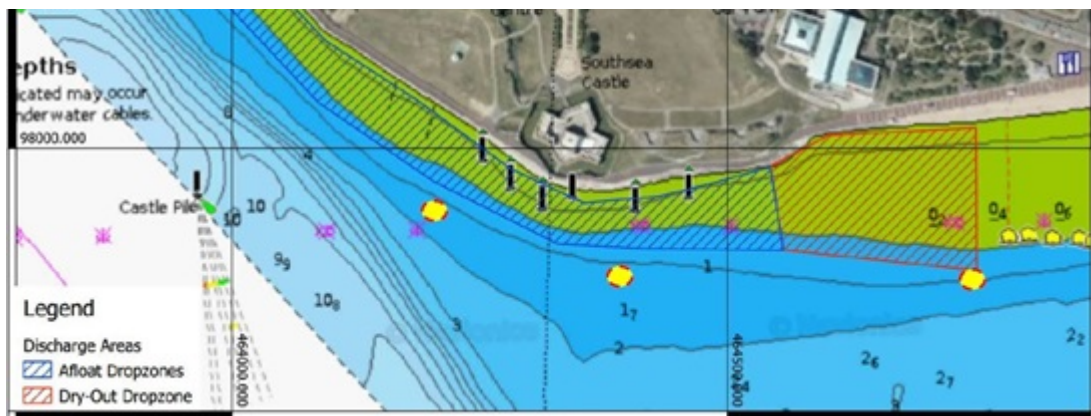
Southsea rock armour landing areas

2. The rock will be delivered to the Solent over an approximately six-month period by the merchant vessel **MV LIAMARE** (call sign PBBH) or a large barge, both of which will anchor at Spithead Anchorage 8A on arrival. Operations will commence on approximately 4 March 2022, with further loads at approximately seven-day intervals. Rock will be transferred to the 84-metre long powered barge **SELINA**. Once loaded, the barge will be manoeuvred under the control of a Portsmouth International Port pilot from Spithead to the Southsea sea front area using supporting tugs. This is planned to take place before high water to allow discharge operations at the top of the tide. The barge will be anchored in place for the duration of discharge operations, or in certain circumstances, beached through the low water period. It is expected that each load in **MV LIAMARE** will require 2 barge loads to discharge.

3. After discharge, **MV LIAMARE** will return to Norway to embark the next load of rock. During this period, the barge **SELINA**, together with escorting tugs, will moor in Ryde Roads or south of the North Sturbridge buoy. The moored vessels will remain attached, will be suitably lit, and manned at all times. Unloading operations will continue as soon as **MV LIAMARE** returns. In inclement weather, alternative, more sheltered locations may be used.

4. The positions of the rock dumps will be marked by a series of 5 lit yellow special marker buoys. A separate QHM NAVWARN will be issued with positions and light characteristics when these buoys are laid. Mariners are warned not to navigate close to the shore in this area as depths may be shallower than charted during rock armour operations.





Chartlet showing approximate positions of marker buoys (not to be used for navigation)

5. During loading and unloading operations, the barge and coaster will be susceptible to wash, and all vessels are requested to pass at a safe speed and appropriate distance, minimising wake waves. During manoeuvres into position off Southsea, the barge and tugs combination will be restricted in their ability to manoeuvre, and all vessels are to keep well clear while they are engaged in approach, mooring and unmooring operations.

6. All vessels involved in this operation will keep QHM informed of progress and will monitor VHF Channels 11, 12 & 16 as necessary. The operations team plan to use VHF Channel 17 for transhipment and beach landing operations.

7. Cancel this Local Notice to Mariners 31 December 2022.

Monday 28 Feb 2022

N J RANDALL  
Queen's Harbour Master

Owners, Agents, Charterers, Marinas, Yacht Clubs and Recreational Sailing Organisations should ensure that the contents of this Notice are made known to the masters or persons in charge of their vessels or craft.