



KING'S HARBOUR MASTER PORTSMOUTH

LNTM No 27/21

SOUTHSEA COASTAL WORKS – ROCK ARMOUR DELIVERY OPERATIONS 7-30 APRIL 2021

1. **NOTICE IS HEREBY GIVEN** by the Queen's Harbour Master Portsmouth that as part of the Southsea Coastal Scheme works, over the period 7-30 April 2021, a delivery of approximately 11,200 tonnes of rock armour will be made to the Long Curtain area of Southsea seafront, close to the harbour entrance and to the north of Clarence Pier.

2. The rock will be delivered to the Solent in two loads by the merchant vessel **MV LIAMARE** (call sign PBBH) which will anchor at Spithead anchorage 8A on arrival, currently planned for 11 April. Rock will then be transferred to the 60-metre long barge **MORMAEN 15** (c/s 2JKD5). Once loaded, the barge will be manoeuvred under the control of a Portsmouth International Port pilot from Spithead to the Long Curtain area using the multicat **SARAH GREY** (c/s ZQQQ5) and the small tug **NEW ROSS** (c/s 2IAR5). This is planned to take place before high water to allow discharge operations at the top of the tide. The barge will be anchored in place for the duration of discharge operations. It is expected that each load in **MV LIAMARE** will require 5 or 6 barge loads to discharge.

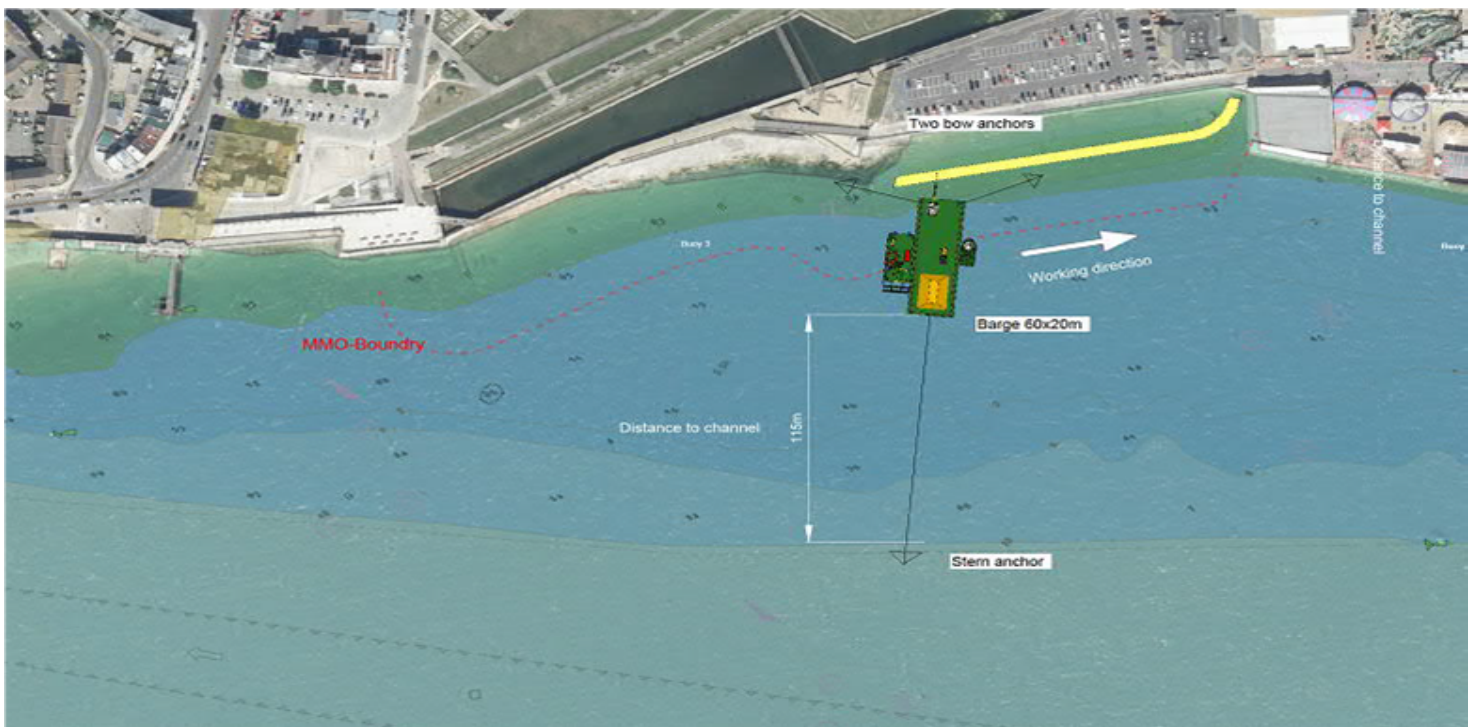


Figure: Rock Barge **MORMAEN 15** landing area adjacent to Clarence Pier

3. Once the first load is discharged, **MV LIAMARE** will return to Norway to embark the second load of rock. During this period, and from 7 April, the barge **MORMAEN 15**, together with **NEW ROSS** and **SARAH GREY**, will moor in Ryde Roads. The moored vessels will remain attached, will be suitably lit, and manned at all times. Unloading operations will continue as soon **MV LIAMARE** returns.

4. During loading and unloading operations, the barge and coaster will be susceptible to wash, and all vessels are requested to pass at a safe speed and distance, minimising wake waves. During manoeuvres into position off Long Curtain, the barge, tug and multicat combination will be restricted in their ability to manoeuvre, and all vessels are to keep well clear while they are engaged in approach, mooring and unmooring operations.

5. All vessels involved in this operation will keep QHM informed of progress and will monitor VHF Channels 11, 12 & 16 as necessary. The operations team plan to use VHF Channel 17 for transshipment and beach landing operations.

6. Cancel this Local Notice to Mariners 1 May 2021.

Wednesday 07 Apr 2021

N J RANDALL

Queen's Harbour Master

Owners, Agents, Charterers, Marinas, Yacht Clubs and Recreational Sailing Organisations should ensure that the contents of this Notice are made known to the masters or persons in charge of their vessels or craft.