



## KING'S HARBOUR MASTER PLYMOUTH

### LNTM No 041/19

#### Water Ski Racing - River Tamar

#### PLYMOUTH LOCAL NOTICE TO MARINERS 41/19

#### RIVER TAMAR - DIRECTION

#### BWS WATER SKI RACES SATURDAY 27 & SUNDAY 28 JULY 2019

1. This is a direction by the Queen's Harbour Master Plymouth pursuant to the Dockyard Port of Plymouth Order 1999.
2. The Water Events Diary 2019 gave early notice of these water ski races, programmed to take place at Saltash Sat 27 & Sun 28 Jul 19. This PLNTM gives information of timings, course, race activities and traffic control, and directs mariners accordingly. It is fundamental for port, vessel and personal safety.

#### 3. Timetable

<b>Sat 27 Jul</b>	1140 – 1150 Ski Demo
	1200 – 1230 Race 1
	1300 – 1330 Race 2
	1415 – 1500 Race 3
	1530 – 1600 Race 4
<b>Sun 28 Jul</b>	1130 – 1200 Race 1
	1230 – 1300 Race 2
	1345 – 1430 Race 3

#### 4. Restricted Area and Course (see accompanying chartlet)

a. A restricted area will be established for the duration of the races, north of the Tamar bridges and south of Neal Point. **Unauthorised craft are not permitted within the restricted area and start/finish line when racing is underway; this area is reserved for competitors, safety and other event craft.** No vessels are to anchor within this area for the duration of the event.

b. The course will be a triangular course around laid inflatable marks within the restricted area. Races will start just south of the course heading north.

#### 5. Spectator areas

- a. Spectators afloat may view the racing from outside the Restricted Area clear of the course.
- b. Official marshalling craft will fly Green Marshall flags. They will patrol the restricted area to assist with the compliance of this Notice.
- c. Policing craft will direct vessels that ignore the stewards' invitation to remain clear of the Restricted Area.

Mariners are reminded that failure to comply with official direction by Officers of the Queen's Harbour Master, which includes MOD Police Officers, may result in prosecution.

## 6. Vessel Traffic Control

- a. All mariners are to note and observe the restriction area detailed above.
- b. Mariners wishing to transit to or from the Upper Tamar are to keep close to the western (Cornwall) side of the channel and passage through the small craft moorings.
- c. During race periods Flag Port Control will make periodic "Securite" broadcasts on VHF channels 16 and 14. Mariners seeking further information should call "Flag" on VHF channel 14 or telephone (01752) 552413 before going afloat.
- d. During the race periods larger recreational/commercial vessels will not be permitted to transit north of the Tamar Bridges.

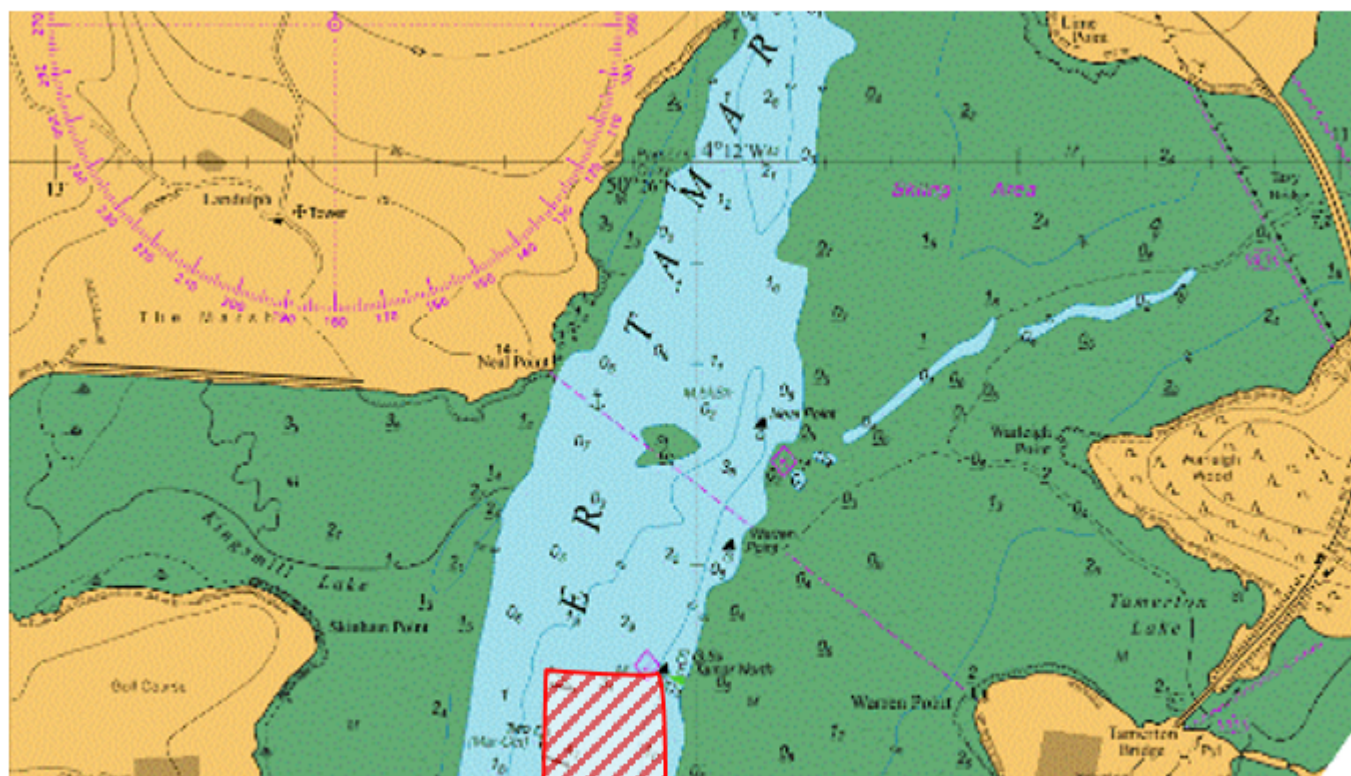
## 7. Race activities

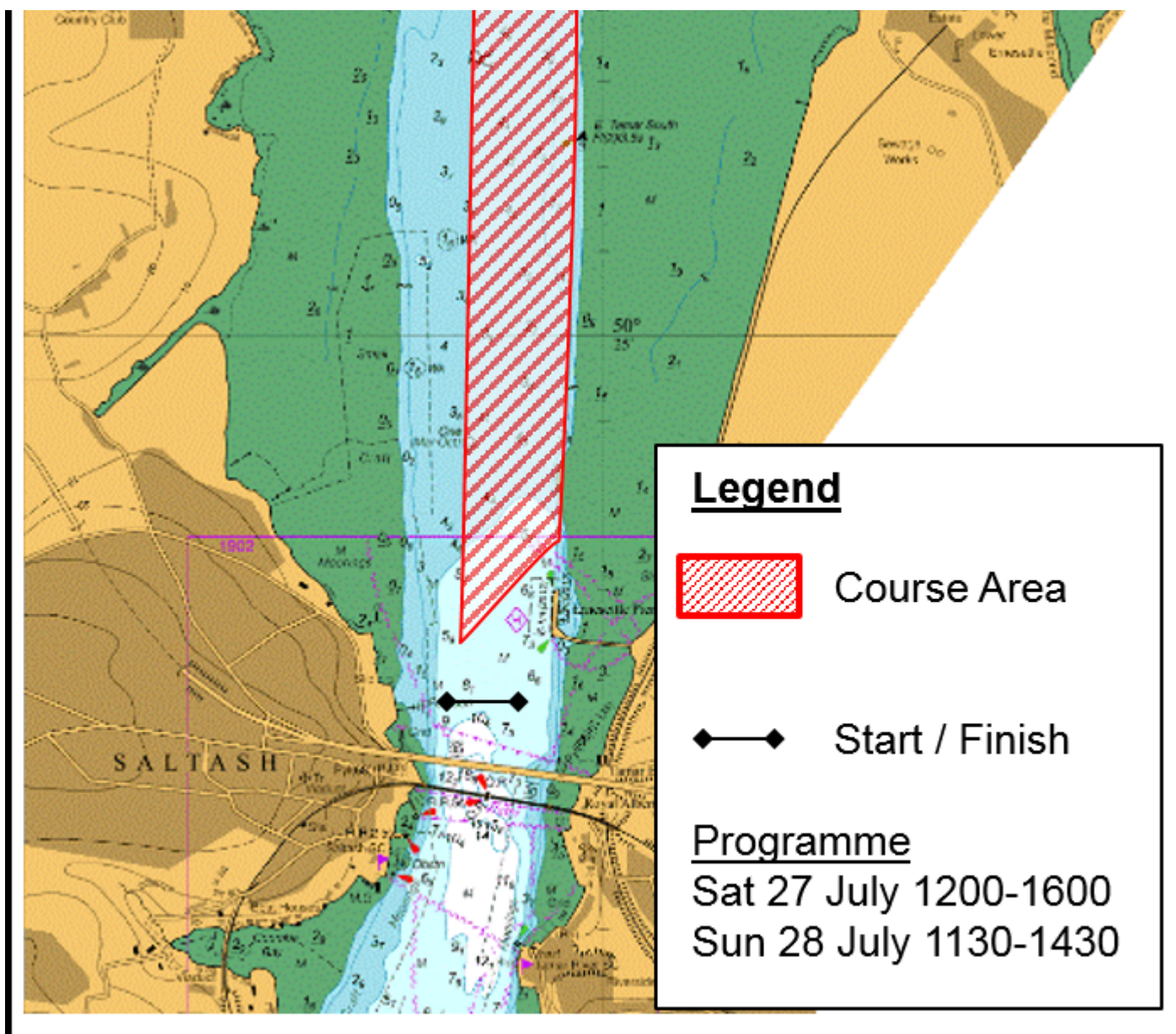
- a. The wet pit area will be at the Saltash Jubilee Green pontoon. Mariners are to be alert to the presence of the ski boats manoeuvring in the vicinity of the slipway and Pontoons before and after racing.
- b. Vessels engaged in event related legitimate activities will fly a distinguishing flag. Marshalling boats will fly a green flag.
- c. Ski boats and their support craft are exempt from the port speed limit whilst in the Restricted Area. Outside of this area they are to comply with the relevant speed limit.

## 8. Warning

- a. Ski boats are capable of considerable speeds. Mariners are to be particularly alert to their presence, the changed rate of encounter and increased rate of bearing change that such speeds produce. Mariners are directed not to encroach into the racecourse and are to obey directions from the MOD Police or QHM.

## Annex A





9. Cancel this PLNTM 29 July 2019.

23 July 2019

Wednesday 24 Jul 2019

C NECKER  
 Queen's Harbour Master Plymouth