



## KING'S HARBOUR MASTER PLYMOUTH

**LNTM No 41/16**

**ORCDA POWER BOAT AND BWS WATER SKI RACES 8TH - 9TH OCTOBER**

**PLYMOUTH SOUND - DIRECTION**

**ORCDA POWERBOAT & BWS WATER-SKI RACES**

**8 - 9 OCTOBER 2016**

1. This is a direction by the Queen's Harbour Master Plymouth pursuant to the Dockyard Port of Plymouth Order 1999.

2. The Water Events Diary 2016 gave early notice of these Powerboat races, programmed to take place at Plymouth 8 – 9 October 2016. This PLNTM gives information of timings, courses, spectator areas, race activities and traffic control, and directs mariners accordingly. It is fundamental for port, vessel and personal safety.

3. Timetable

Saturday 8 October

1345 – 1400	Course Familiarisation/Practice
1415 – 1445	Powerboat Race 1
1545 – 1615	Powerboat Race 2

Sunday 9 October

1145 – 1215	Water-Ski Race 1
1230 – 1300	Powerboat Race 3
1330 – 1415	Water-Ski Race 2
1430 – 1500	Powerboat Race 4
1515 – 1530	Water-Ski Race 3

4. Courses (see accompanying chartlet as appropriate)

a. Offshore Course

i. From the pits area to a start loitering position in the vicinity of Dunstone buoy.

- ii. From the loitering area into a circuit leaving Ash buoy to port, Asia buoy to port, Melampus buoy to starboard, E Buoy to port, F Buoy to port, S Mallard buoy to starboard, laid orange buoy to port.

b. Rough Weather Course

- i. From the pits area to a start loitering position in the vicinity of Dunstone buoy.
- ii. From the loitering area into a circuit leaving Ash buoy to port, Asia buoy to port, NW Winter buoy to starboard, S Winter buoy to port, W Mallard buoy to starboard, laid orange buoy to port (see chartlet).

c. Water-Ski Course

- i. From the pits area to a start loitering position in the vicinity of Asia buoy starting towards the laid turning mark south of the RPCYC.
- ii. From the loitering area into a circuit leaving 3 laid orange to marks to port. The water-ski course will be contained within the confines of the OCR Offshore course sharing a orange laid turning mark south of the RPCYC.

d. Course Boundary

- i. Only authorised craft are permitted within 50m of the course boundaries.

5. Spectator areas

- a. **Unauthorised craft are not permitted within 50m of the powerboat course; this area is reserved for safety and other event craft.**
- b. Spectators afloat may view the racing clear of the courses.
- c. Official steward craft will patrol the course boundaries and invite spectators or other craft to remain clear.
- d. Policing craft will direct vessels that ignore the stewards' invitation to remain clear of the courses. Mariners are reminded that failure to comply with official direction by Officers of the Queen's Harbour Master, which includes MOD Police Officers, or the Cattewater Harbour Master and Sutton Harbour Lock keepers, may result in prosecution.

6. Race activities

- a. The wet pit area at the Mount Batten Centre. Mariners are to be alert to the presence of the powerboats manoeuvring in the vicinity of the Mount Batten Pontoons before and after racing.
- b. Mariners should be alert to the presence of the course marks. Mariners are directed to not interfere with temporary marks that are laid to assure safety.
- c. Vessels engaged in event related legitimate activities will fly a distinguishing flag.
- d. Powerboats and their support craft are exempt from the port speed limit whilst in the port **during** races. Speed is to be kept as low as practicable during transit to races, while paying due regard for the safety of others and the International Regulations for Preventing Collisions at Sea. During practice, vessels are to comply with the port speed limit.

7. Vessel Traffic Control

- a. All mariners are to note and observe the restrictions on movement in the paragraphs below.

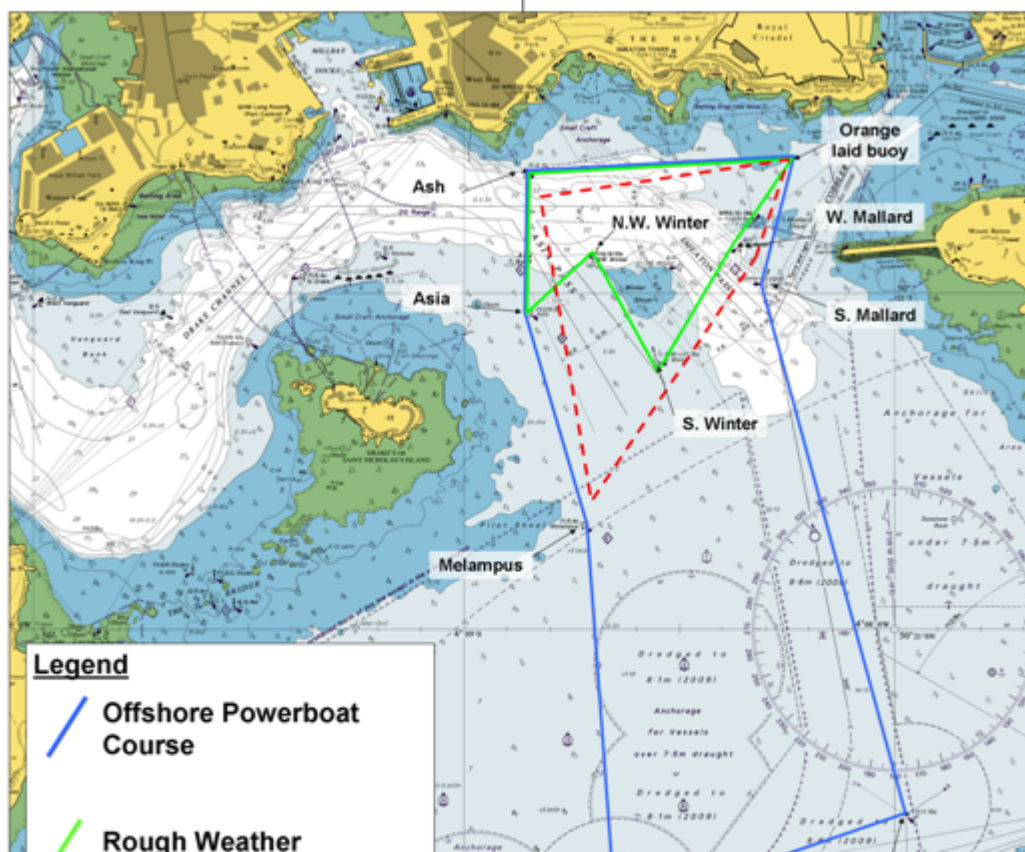
- b. Mariners wishing to proceed from the Plym, Sutton Harbour or the Cattewater to seaward of the powerboat course are advised to do so in sufficient time before access to the Sound is restricted. Limited and controlled access close around Mount Batten Pier to Jennycliffe Bay will be permitted.
- c. During competitions on the main course, access from seaward for small craft to/from Millbay, the Hamoaze and River Tamar is permitted passing to the west of E buoy and through The Bridge channel. Small Craft wishing to move to and from Millbay Marina will be allowed limited and controlled movement to westwards of Millbay, close inshore under Longroom PCS control.
- d. Limited access across the front of the Hoe may be permitted between races. Access will be strictly controlled by Longroom Port Control and the Marshalls.
- e. During race periods on Saturday 8 and Sunday 9 October Longroom Port Control will make periodic "Securite" broadcasts on VHF channels 16 and 14. Mariners seeking further information should call "Longroom" on VHF channel 14 or telephone (01752) 836528 before going afloat.
- f. During the race periods on Saturday 8 and Sunday 9 October large merchant vessels will not be permitted to move. Small craft may move within spectator areas but are not to encroach onto the course.

8. Warning

- a. Powerboats are capable of considerable speeds. Mariners are to be particularly alert to their presence, the changed rate of encounter and increased rate of bearing change that such speeds produce. Mariners are directed not to encroach into the racecourse and are to obey directions from Police or QHM.

9. Cancel this PLNTM 10 October 2016.

**ORCDA POWER BOAT & BWS WATER-SKI RACES 2016**  
**COMBINED COURSE**





Wednesday 05 Oct 2016

C NECKER

Queen's Harbour Master Plymouth