



KING'S HARBOUR MASTER PLYMOUTH

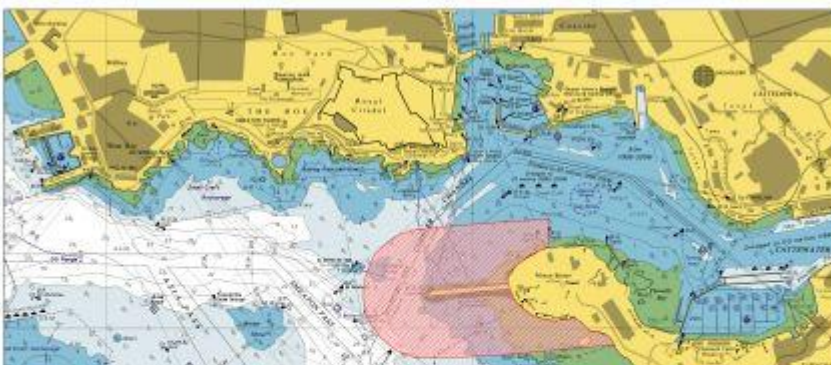
LNTM No 35/16

PLYMOUTH SOUND AND CATTEWATER - DIRECTION

FIREWORKS COMPETITIONS - 16 & 17 AUGUST 2016

1. This notice is a direction by the Queen's Harbour Master Plymouth pursuant to the Dockyard Port of Plymouth Order 1999. It is issued jointly with The Cattewater Harbour Commissioners and Harbour Master.
2. The 2016 British Fireworks Competitions will take place from Mount Batten Breakwater on Tuesday 16th and Wednesday 17th August 2016 starting at about 2130 on each evening.
3. During the fireworks displays aquatic fireworks may be projected from Mount Batten Breakwater towards the north. Additionally, spent fireworks may fall in the vicinity during the display. In order to minimise risk to waterborne spectators an exclusion zone is established 200 metres to the North, South and West of Mount Batten Breakwater on each day between the hours of 2100 and 2230, or as determined by competition timings. The zone is indicated on the accompanying chartlet. Should weather conditions dictate, it may be necessary to extend the exclusion zone to safeguard craft and spectators.
4. During the period 2100 - 2230 or as directed by Longroom Port Control Station, all craft, whether carrying spectators or in transit are to keep clear of the exclusion zone. Official steward craft will patrol the area boundaries and invite spectators or other craft to remain clear of the exclusion zone. Steward craft will display an illuminated blue flag and may also display an amber flashing light to aid identification. Policing craft will direct vessels that ignore the stewards' invitation to remain clear of the exclusion zone. Mariners are reminded that failure to comply with official direction by the Officers of the Queen's Harbour Master, which includes MOD Police Officers, Cattewater Harbour Master, and Sutton Harbour Lock keepers, may result in prosecution.
5. Masters and skippers of craft are reminded to be particularly vigilant during the actual displays when there is a high risk of being distracted from the demands of navigational safety.
6. Access to or from the Cattewater for large commercial vessels will not be permitted immediately preceding, during, and after the displays.
7. Cancel this Notice on 18 August 2016.

ANNEX A
To PLNTM 34/16





Friday 12 Aug 2016
C NECKER
Queen's Harbour Master Plymouth