



KING'S HARBOUR MASTER PLYMOUTH

LNTM No 26/16

Single handed Transatlantic Race 2 May 2016 - Direction

PLYMOUTH LOCAL NOTICE TO MARINERS 26/16

PLYMOUTH SOUND

START OF THE TRANSAT

SINGLE-HANDED TRANSATLANTIC RACE 2 MAY 2016

INTRODUCTION

1. This is a direction by the Queen's Harbour Master Plymouth pursuant to the Dockyard Port of Plymouth Order 1999.
2. The TRANSAT Yacht Race will start in Plymouth at 1430 on Monday 2 May 2016. Approximately 25 monohull and multihull yachts will be competing, sailing from the Cattewater and manoeuvring in the Sound and South of the Breakwater prior to race start. They will require a significant amount of sea room.
3. All vessels are to manoeuvre in accordance with the International Rules for Preventing Collisions at Sea.

Non-competitors are to give competitors a wide berth when ever possible.

TRAFFIC RESTRICTIONS .

4. Due to the size and manoeuvrability of the participating yachts there are 2 options for the start. The decision on which start line is to be used will be promulgated on Sunday 1 May
5. To ensure vessel and personal safety within the Port, the following traffic restrictions will apply on Monday 2 May 2016 (See chart extracts):

Start North of the Breakwater

- a. Restricted Area - allocated to official craft and competitors only 1230 to 1445.
- b. Spectator Areas - allocated to spectator craft.
- c. Vessels shall not anchor in Plymouth Sound north of Plymouth Breakwater between 1200 and 1500. However, vessels may use the anchorages in Cawsand Bay and south of Plymouth Breakwater without restriction but are to keep Longroom informed of their intentions via VHF Channel 14.
- d. Small vessels which require to enter/leave Plymouth between 1200 and 1500 are to do so either via the Eastern Channel keeping to the east of S Mallard, Dunstone and Duke Rock, or via the Western Channel passing northwest of Queens Ground and through the Bridges Channel.

e. Small vessels may also transit to and from the Hamoaze/Cattewater keeping north of the deep water track between Millbay and Fishers Nose.

Start South of the Breakwater

a. Restricted Area - allocated to official craft and competitors 1230 to 1445.

b. Spectator Areas - allocated to spectator craft.

c. Vessels may anchor in Jennycliff Bay and Cawsand Bay without restriction but are to keep Longroom informed of their intentions via VHF Channel 14.

d. Small vessels which require to enter/leave Plymouth between 1200 and 1445 may do so either via the Eastern Channel or via the Western Channel keeping clear of the Restricted Area.

For both Start Options

6. To ensure the safety of competing yachts leaving Queen Anne's Battery Marina, traffic in Sutton Channel will be closely controlled by the Cattewater Harbour Master between 1030 and 1200. Any Sutton Channel traffic control measures apply to all official craft as well as spectator and commercial vessels.

7. All vessels are to remain at least 50 metres clear of anchored or moored warships and auxiliaries at all times.

MARSHALLING CRAFT/OFFICIAL POLICING CRAFT

8. Marshalling craft will fly Blue Marshall flags. They will patrol the restricted area and to assist with the compliance of this Notice. Additionally, policing craft (Blue lights, QHM, MOD Police) will be in attendance to direct vessels to remain clear if necessary. Mariners are reminded that failure to comply with official direction by the Cattewater Harbour Master, Sutton Harbour Lock keepers and Officers of the Queen's Harbour Master, which includes MOD Police Officers, may result in prosecution.

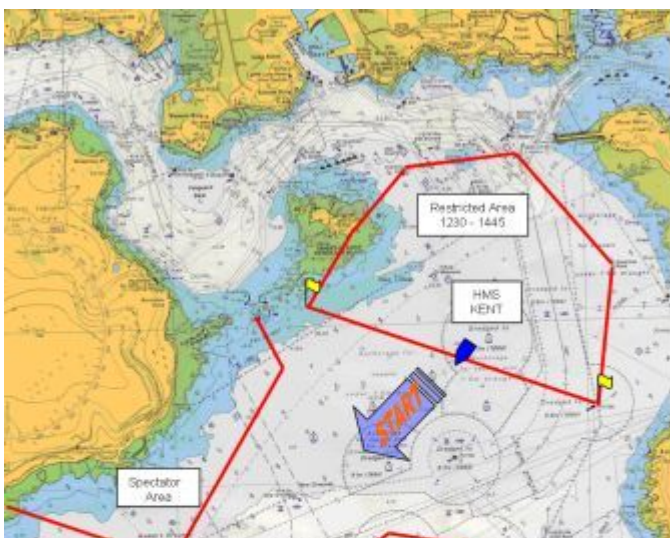
SPECTATOR CRAFT

9. These vessels are encouraged to use the Spectator Areas and are to keep clear of the Restricted Area during the period 1230 to 1445.

10 Cancel this Notice on 3 May 2016.

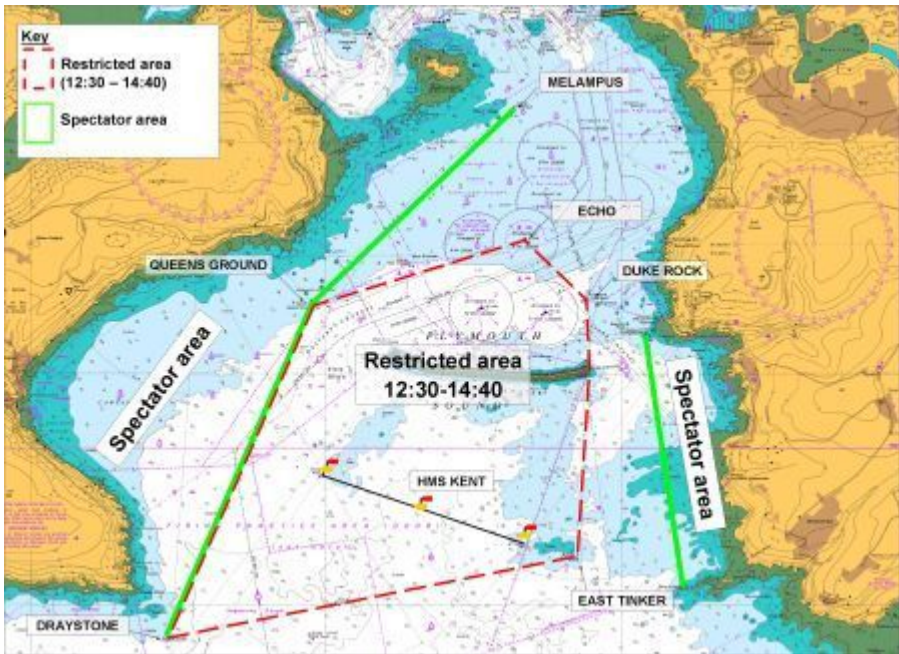
CHARTLET SHOWING RESTRICTED AREA AND SPECTATOR AREAS

START NORTH OF THE BREAKWATER





START SOUTH OF THE BREAKWATER



Friday 29 Apr 2016
 C NECKER
 Queen's Harbour Master Plymouth