



KING'S HARBOUR MASTER CLYDE

DIRECTION No 04/22

APPROVAL FOR SELECTED CRAFT TO OPERATE AT HIGH SPEED WITHIN THE CLYDE DOCKYARD PORT

References

A - The Clyde Dockyard Port of Gareloch and Loch Long Order 2011.

Introduction

1. Mariners are advised that the King's Harbour Master Clyde has made the following General Direction under the Clyde Dockyard Port of Gareloch and Loch Long Order 2011.

2. Following publication of the Clyde Dockyard Port of Gareloch and Loch Long Order 2011, and a subsequent period of research and consultation Clyde Marine Unit (CMU) craft are authorised to conduct patrols above the speed limit, in specifically designated areas of the Clyde Dockyard Port. This has been agreed to facilitate an operational security need and to conduct Police marine training required by CMU officers in their security role. It also covers those occasions when there is a requirement to conduct patrol launch sea trials or other approved operations. The CMU has conducted comprehensive risk assessments for all tasks within the Dockyard Port which fall within the remit of this General Direction.

Patrol Speeds

3. CMU RHIBs are permitted to conduct patrols at the speed limits shown below in the Faslane areas specifically designated by Annex A:

- a. Faslane North and South Basin – no more than 3 knots.
- b. Faslane Protected Area up to the northern end of the boom – no more than 7 knots.
- c. Faslane Restricted Area, heading north then west to the west side of the Gareloch down to adjacent to KHM Harbour Control, then heading east towards Sierra buoy until 100 m off Sierra buoy - no more than 15 knots.

4. CMU RHIBs are permitted to conduct patrols at the speed limits shown below in the Coulport and Glen Mallan areas specifically designated by Annex's B and C:

- a. Up to 15-20 knots within the waterfront Protected and Restricted areas when there are no other vessels operating in the vicinity.
- b. When there are other vessels operating in the vicinity, CMU RHIBs must comply with the Clyde Dockyard Port speed limits within the Protected and Restricted area.

Trials / Training Speed Area

5. A specific 'high speed' area for CMU and C Squadron sea trials, training and special operations has been established in the Gareloch (Annex C) and Loch Long (Annex D).

6. High speeds in this area may **only** be activated with the specific permission of the KHM Harbour Controller (on behalf of KHM). Vessels wishing to use this area for high-speed trials / training / special operations are to request permission from the KHM Harbour Controller on VHF Channel 73 prior to commencing speed work and inform the KHM Harbour Controller on completion. In addition, units are strongly recommended to liaise with the KHM Harbour Planning Office whenever possible to programme in such activity a minimum of 48 hours before the event. A Risk Assessment for the activity must be provided to QHM prior to permission being sought, for C Squadron and CMU this may be in the form of a generic Risk Assessment which is updated annually. Any other unit wishing to conduct such work must present a specific Risk Assessment to KHM on initial application.

7. These areas are only to be for speeds above that authorised by the Dockyard Port Order by CMU, C Squadron or other units specifically authorised by KHM. The Coxswain of the vessel retains full responsibility for the safe conduct of his vessel at all times.

CMU Emergency Response

8. At any time when responding to an emergency incident, all CMU Police vessels have a caveat to operate at speed, if deemed absolutely necessary, provided the Coxswain has due regard to the prevailing circumstances and conditions and observance of good seamanship. On

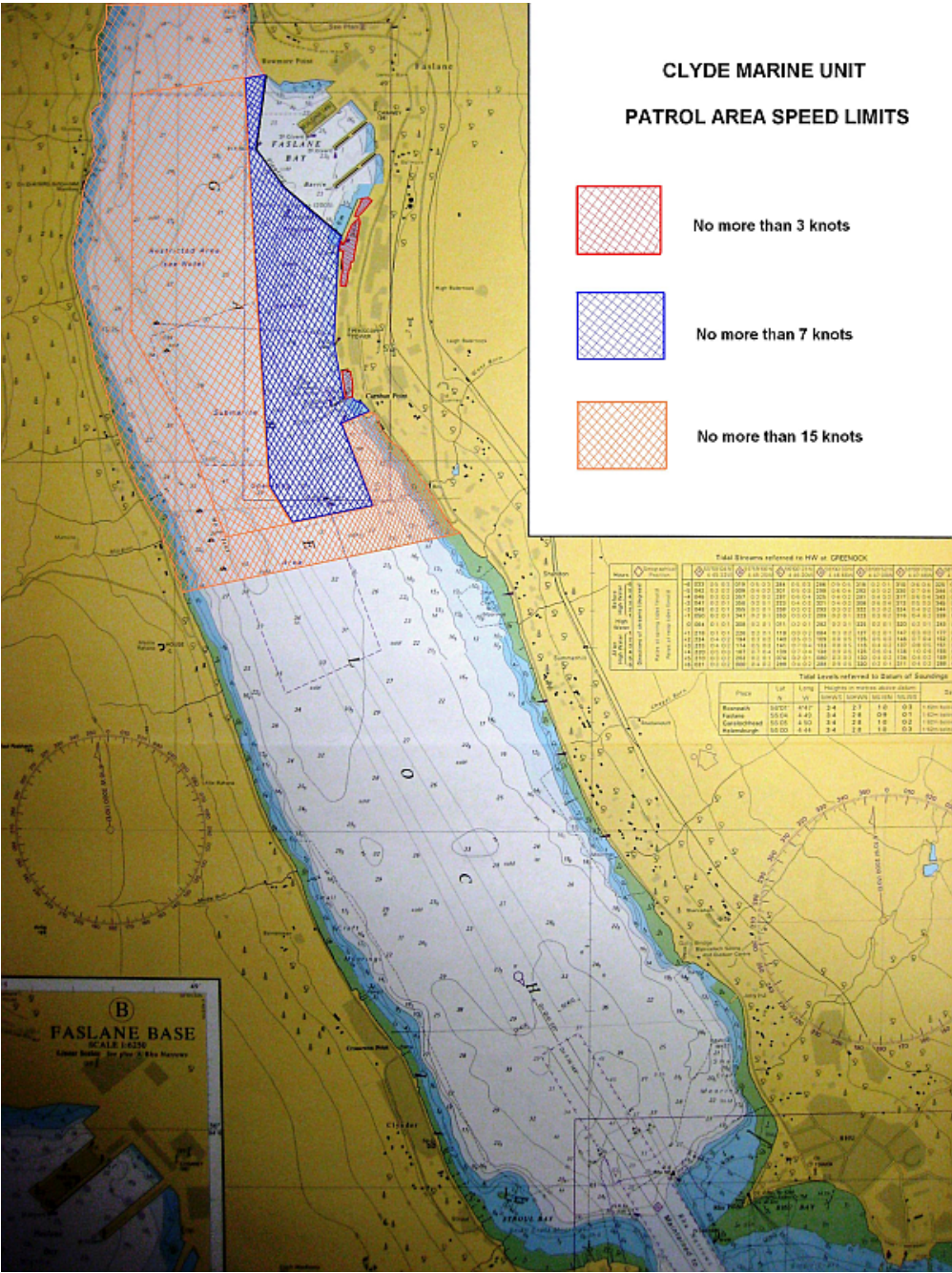
such occasions appropriate emergency signals must be displayed.

9. This General Direction will be reviewed by 10th Jan 23.

Annexes:

- A. Chartlet showing approved speeds for CMU patrol areas at Faslane.
- B. Chartlet showing approved speeds for CMU patrol areas at Coulport.
- C. Chartlet showing approved speeds for CMU patrol areas at Glen Mallan.
- D. Chartlet showing approved area for vessels training and conducting special ops at speed in the Gareloch.
- E. Chartlet showing approved area for vessels training and conducting special ops at speed in Loch Long.

ANNEX A
CHARTLET SHOWING APPROVED SPEEDS FOR CMU PATROL AREAS AT FASLANE



ANNEX B
CHARTLET SHOWING APPROVED SPEEDS FOR CMU PATROL AREAS AT COULPORT

CLYDE MARINE UNIT

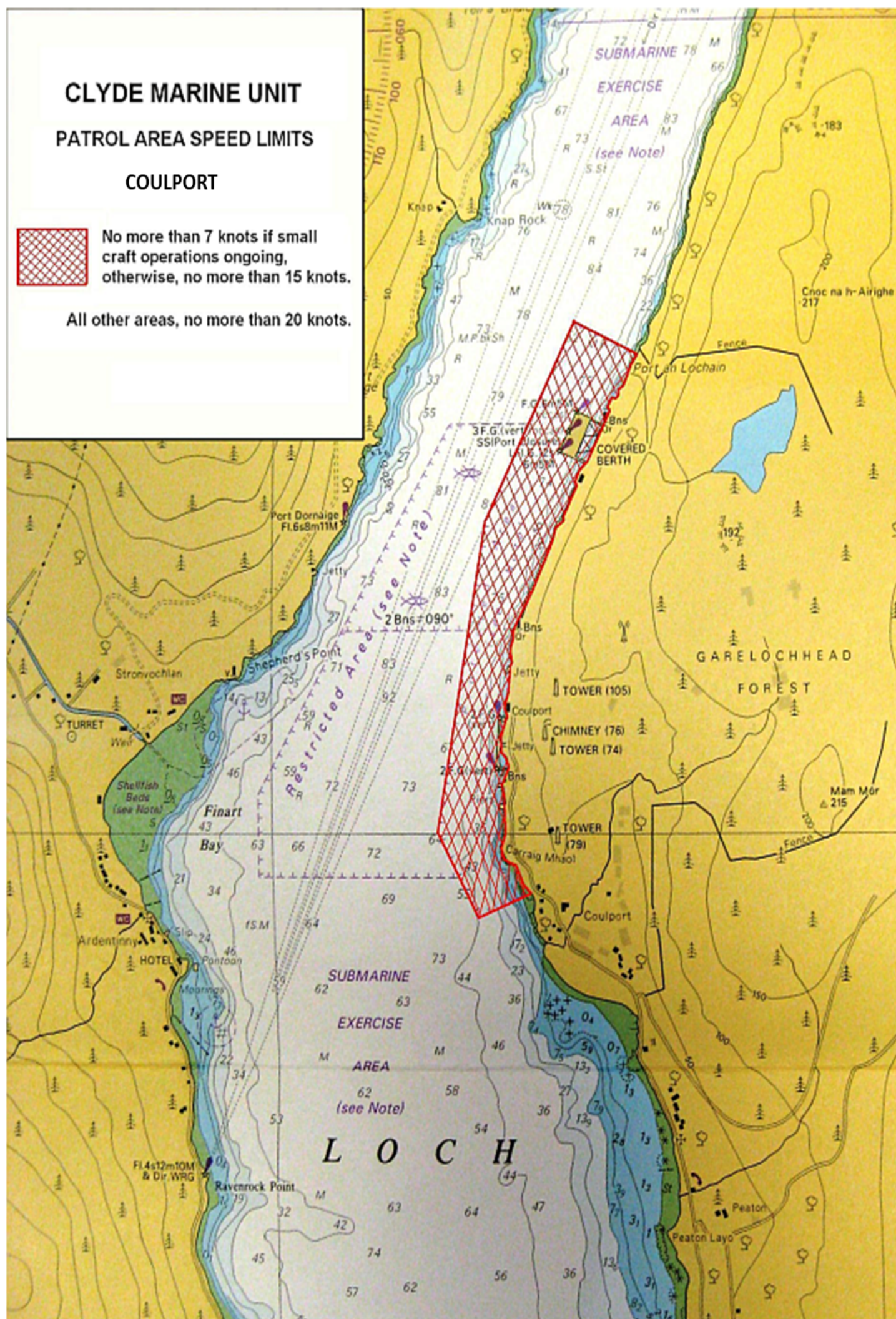
PATROL AREA SPEED LIMITS

COULPORT



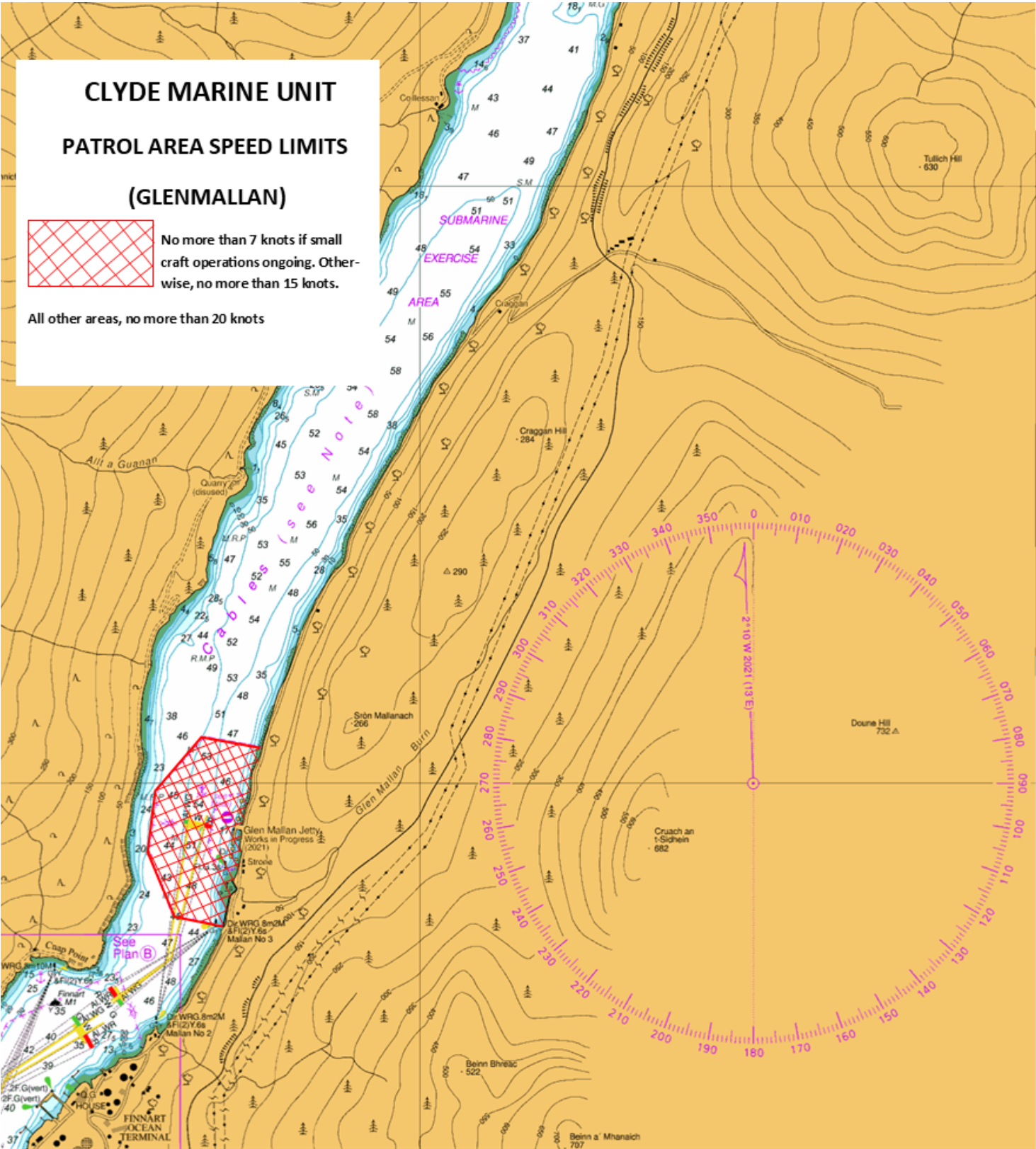
No more than 7 knots if small craft operations ongoing, otherwise, no more than 15 knots.

All other areas, no more than 20 knots.



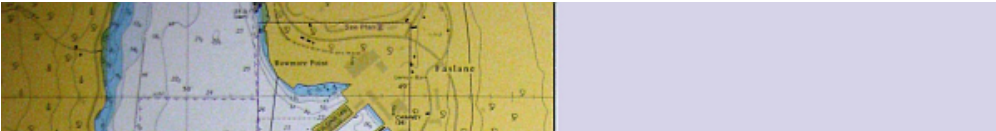
ANNEX C

CHARTLET SHOWING APPROVED SPEEDS FOR CMU PATROL AREAS AT GLEN MALLAN



ANNEX D

CHARTLET SHOWING APPROVED AREA FOR VESSELS TRAINING AND CONDUCTING SPECIAL OPS AT SPEED IN THE GARELOCH





King's Harbour Master

Renown Building
HM Naval Base, Clyde
<http://www.royalnavy.mod.uk/qhm/clyde/local-notice>

Saturday 10 Sep 2022

Ian White
King's Harbour Master
Clyde Dockyard Port