



KING'S HARBOUR MASTER CLYDE

DIRECTION No 12/21

Water Sports in CDP

1. Mariners are advised that the Queen's Harbour Master Clyde has made the following General Direction under the Clyde Dockyard Port of Gareloch and Loch Long Order 2011.

Windsurfing. Windsurfing is only permitted within the designated areas detailed below.

a. Designated Windsurfing Area (Helensburgh). (See Admiralty Chart No 1994). A designated windsurfing area, bounded by the following positions, has been established off Helensburgh as follows:

A - 56°00.367'N, 4°45.376'W (As far as the tide flows)

B - 56°00.066'N, 4°45.359'W

C - 55°59.859'N, 4°45.126'W

D - 55°59.263'N, 4°44.365'W

E - 55°59.263'N, 4°41.823'W (As far as the tide flows).

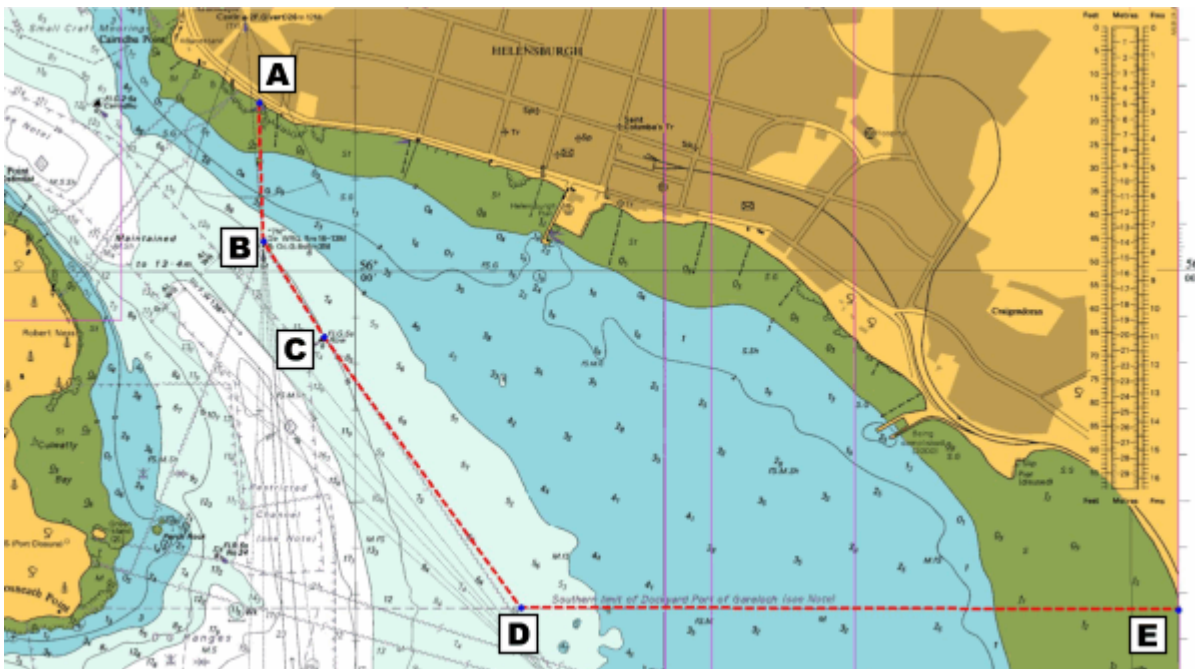


Figure 1 – Helensburgh Windsurfing Area

b. Designated Windsurfing Area (Gareloch). (See Admiralty Chart No 2000). A designated windsurfing area, bounded by the following positions, has been established in the Gareloch, as far as the tide flows, in the following positions

A - 56°02.334'N, 4°49.743'W (Northern Boundary)

B - 56°02.645'N, 4°48.398'

C - 56°01.321'N, 4°48.849'W

D - 56°01.643'N, 4°47.558'W (Southern Boundary)

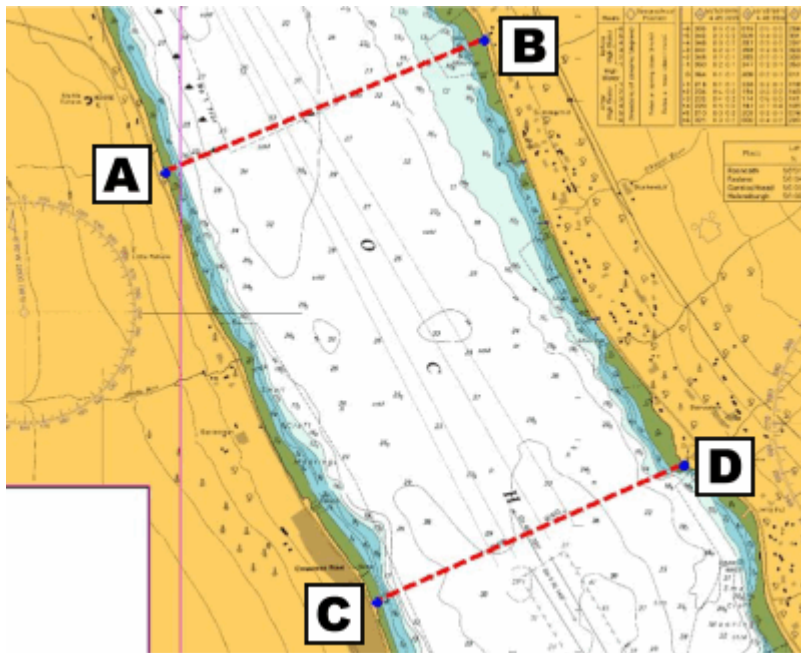


Figure 2 – Gareloch Windsurfing Area

c. **Temporary Restrictions on Navigation within the Rhu Narrows Restricted Channel.** When the temporary restrictions on navigation within the Rhu Narrows Restricted Channel detailed at Schedule 6, Art 2 of the Clyde Dockyard Port of Gareloch and Loch Long Order 2011, are in force, windsurfing is not permitted in any part of the Dockyard Port. Such restrictions will be indicated by the illumination of a red light above two green lights supplemented by a red rectangular flag with a white diagonal bar displayed on any naval vessel or auxiliary within the Rhu Narrows Restricted Channel and at masts at the following locations

(i) Rosneath Lattice Mast in position 55 59.340N 004 46.090W

(ii) Rhu Hard (Off Site Centre) in position 56 00.766N 004 46.066W

3. **Swimming Underwater and Diving.** Otherwise than in accordance with a written permission granted by the Queen's Harbour Master, no person shall swim either on the surface or underwater.

a. within 200 metres of the walls, slipways or boundaries of a Crown Establishment;

b. within 250 metres of any of Her Majesty's vessels; or

c. where anchorage is prohibited.

4. **Parascending etc.** Otherwise than in accordance with a written permission granted by the Queen's Harbour Master, no person shall engage, or take part in, parascending or other activity involving the towing of a kite, or other thing, from land or water, in such a manner as to cause it to become airborne in any part of the Dockyard Port.

5. **Water skiing and Jet-Skiing.** Otherwise than in accordance with a written permission granted by the Queen's Harbour Master, no water-skiing or jet-skiing is permitted within the Dockyard Port.

6. This General Direction will be reviewed by 10 Jan 22.

Queen's Harbour Master

Renown Building

HM Naval Base, Clyde.

<http://www.royalnavy.mod.uk/qhm/clyde/local-notice>

Tuesday 12 Jan 2021

Queen's Harbour Master