



KING'S HARBOUR MASTER CLYDE

DIRECTION No 04/21

APPROVAL FOR SELECTED CRAFT TO OPERATE AT SPEED WITHIN THE CLYDE DOCKYARD PORT

1. Mariners are advised that the Queen's Harbour Master Clyde has made the following General Direction under the Clyde Dockyard Port of Gareloch and Loch Long Order 2011.

2. Following publication of the Clyde Dockyard Port of Gareloch and Loch Long Order 2011, and a subsequent period of research and consultation Clyde Marine Unit (CMU) Craft are now authorised to conduct patrols above the speed limit, in specifically designated areas of the Clyde Dockyard Port. This has been agreed to facilitate an operational security need and to conduct Police marine training required by CMU officers in their security role. It also covers those occasions when there is a requirement to conduct patrol launch sea trials or other approved operations. The CMU has conducted comprehensive risk assessments for all tasks within the Dockyard Port which fall within the remit of this General Direction.

Patrol speeds

3. CMU RHIBs are permitted to conduct patrols at the speed limits shown below in the Faslane areas specifically designated by Annex A:

- i. Faslane North and South Basin – no more than 3 knots.
- ii. Faslane Protected Area up to the northern end of the boom – no more than 7 knots.
- iii. Faslane Restricted Area, heading north then west to the west side of the Gareloch down to adjacent to QHM's eyrie, then heading east towards Sierra buoy until 100 m off Sierra buoy - no more than 15 knots.

4. CMU RHIBs are permitted to conduct patrols at the speed limits shown below in the Coulport areas specifically designated by Annex B:

- i. Up to 15-20 knots within the waterfront Protected and Restricted area when there are no other vessels operating in the vicinity.
- ii. When there are other vessels operating in the vicinity, CMU RIBs must comply with the Clyde Dockyard Port speed limits within the Protected and Restricted area.

Trials / training speed area

5. A specific 'high speed' area for CMU and Fleet Protection Group Royal Marines (FPGRM) sea trials, training and special operations has been established in the Gareloch (Annex C) and Loch Long (Annex D).

6. High speeds in this area may **only** be activated with the specific permission of the Harbour Controller (on behalf of QHM). Vessels wishing to use this area for high speed trials / training / special operations are to request permission from the Harbour Controller on VHF Channel 73 prior to commencing speed work and inform the Harbour Controller on completion. In addition, units are strongly recommended to liaise with the Harbour Planning Office whenever possible to programme in such activity a minimum of 48 hours before the event. A Risk Assessment for the activity must be provided to QHM prior to permission being sought, for FPGRM and CMU this may be in the form of a

generic Risk Assessment which is updated annually. Any other unit wishing to conduct such work must present a specific Risk Assessment to QHM on initial application.

7. These areas are only to be for speeds above that authorised by the Dockyard Port Order by CMU, FPGRM or other units specifically authorised by QHM. The Coxswain of the vessel retains full responsibility for the safe conduct of his vessel at all times.

CMU emergency response

8. At any time when responding to an emergency incident, all CMU Police vessels have a caveat to operate at speed, if deemed absolutely necessary, provided the Coxswain has due regard to the prevailing circumstances and conditions and observance of good seamanship. On such occasions appropriate emergency signals must be displayed.

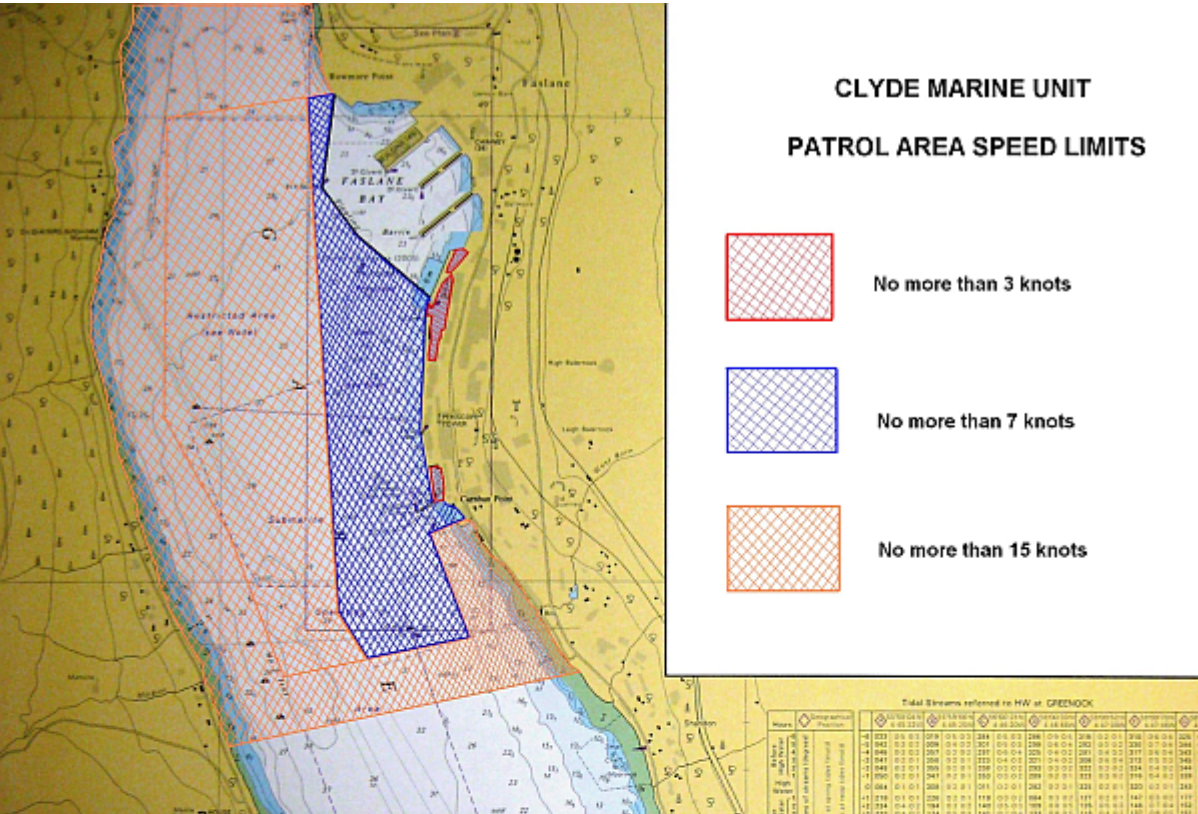
9. This General Direction will be reviewed by 10th Jan 22.

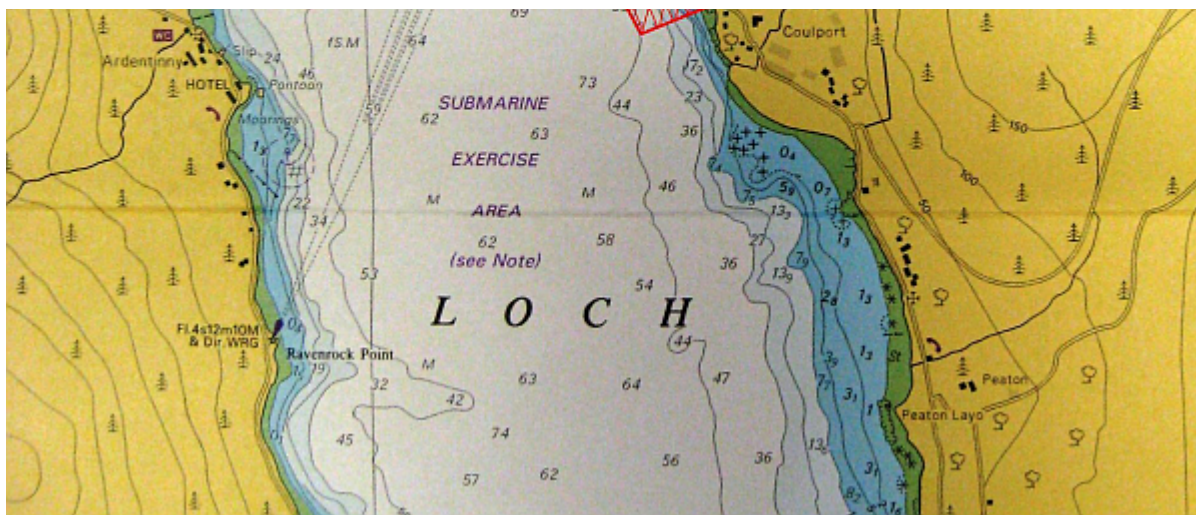
Annexes:

- A. Chartlet showing approved speeds for CMU patrol areas at Faslane.
- B. Chartlet showing approved speeds for CMU patrol areas at Coulport.
- C. Chartlet showing approved area for vessels training and conducting special ops at speed in the Gareloch.
- D. Chartlet showing approved area for vessels training and conducting special ops at speed in Loch Long.

ANNEX A

CHARTLET SHOWING APPROVED SPEEDS FOR CMU PATROL AREAS AT FASLANE

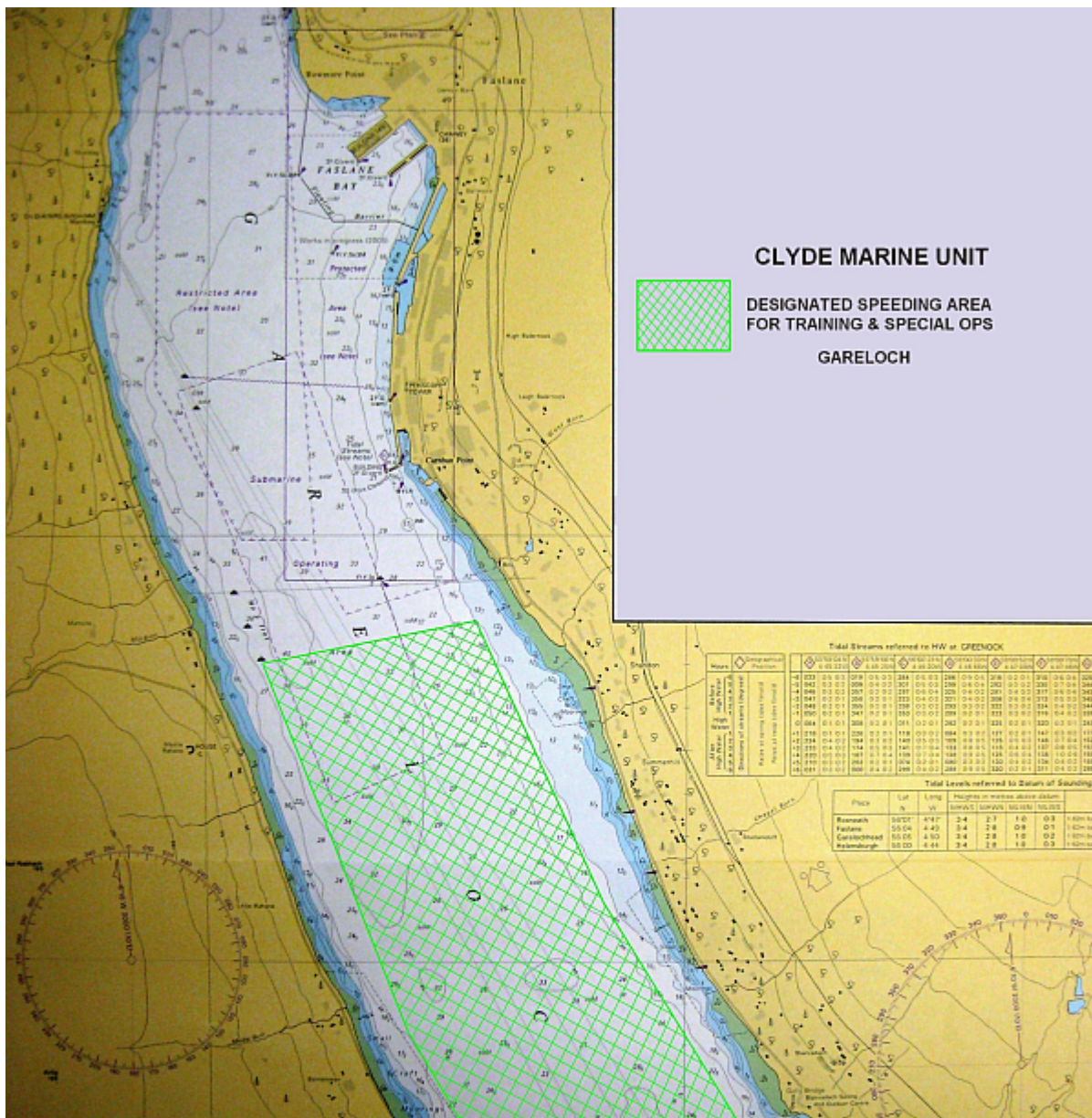


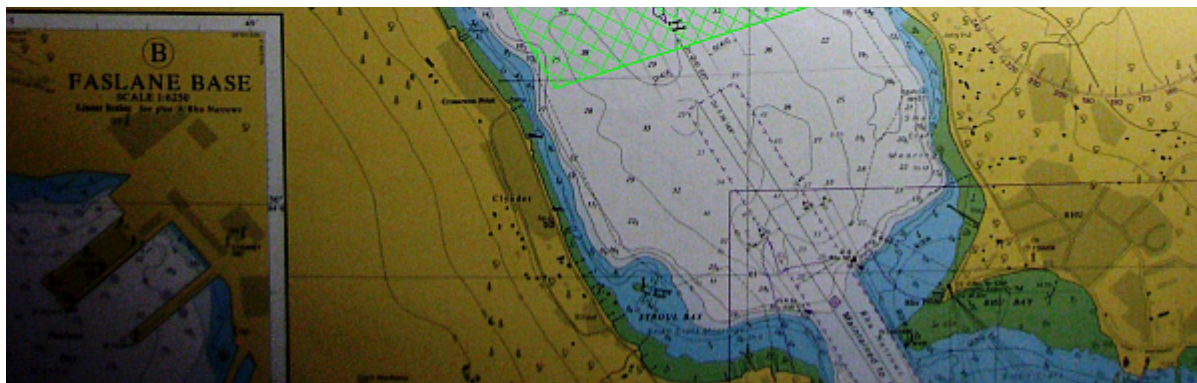


ANNEX C

CHARTLET SHOWING APPROVED AREA FOR VESSELS TRAINING AND CONDUCTING

SPECIAL OPS AT SPEED IN THE GARELOCH

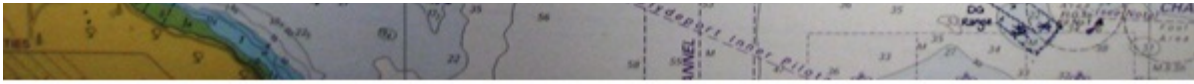




ANNEX D

CHARTLET SHOWING APPROVED AREA FOR VESSELS TRAINING AND CONDUCTING
SPECIAL OPS AT SPEED IN THE LOCH LONG





Queen's Harbour Master

Renown Building

HM Naval Base, Clyde.

<http://www.royalnavy.mod.uk/qhm/clyde/local-notice>

-

-

Tuesday 12 Jan 2021

Queen's Harbour Master